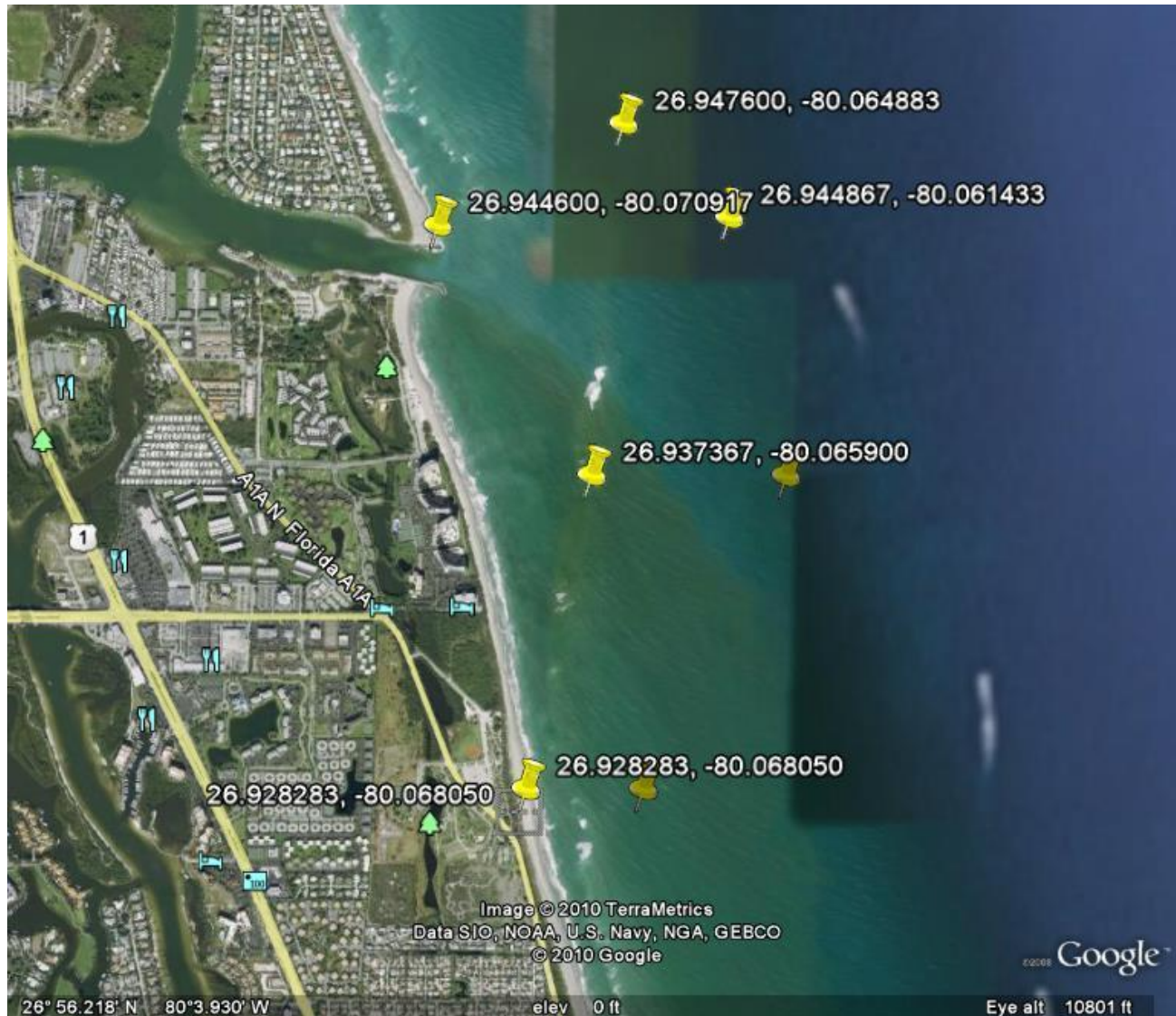


Jupiter Wreck SAJ-1990-30285

17 August 2010 ; 10am – 2pm

FWC (Erin McDevitt, Erick Ault), Jacksonville District (Melody White),
and NMFS (Jocelyn Karazsia)



Jupiter Wreck platform inside Jupiter Inlet

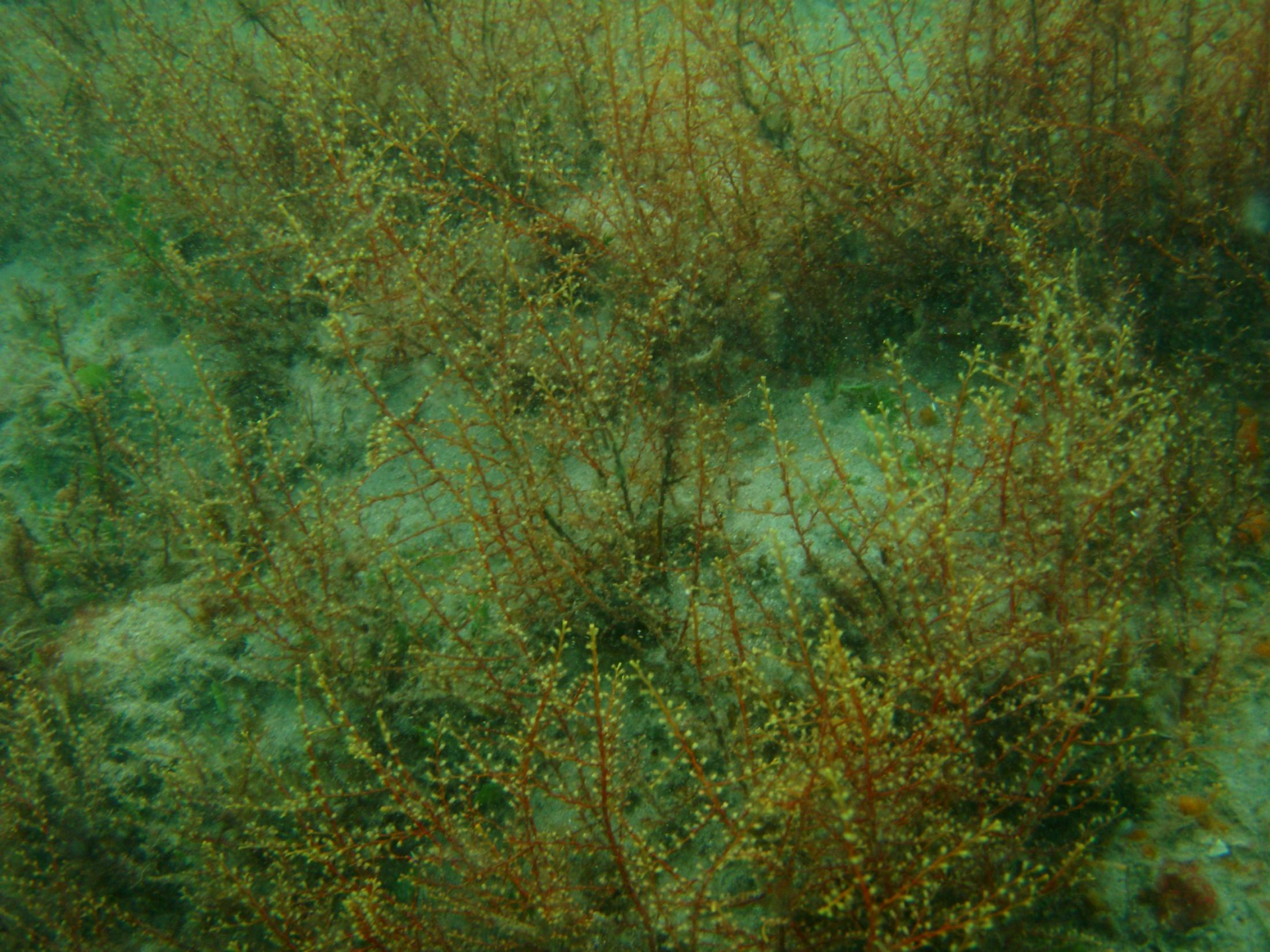


Jupiter Wreck platform inside Jupiter Inlet

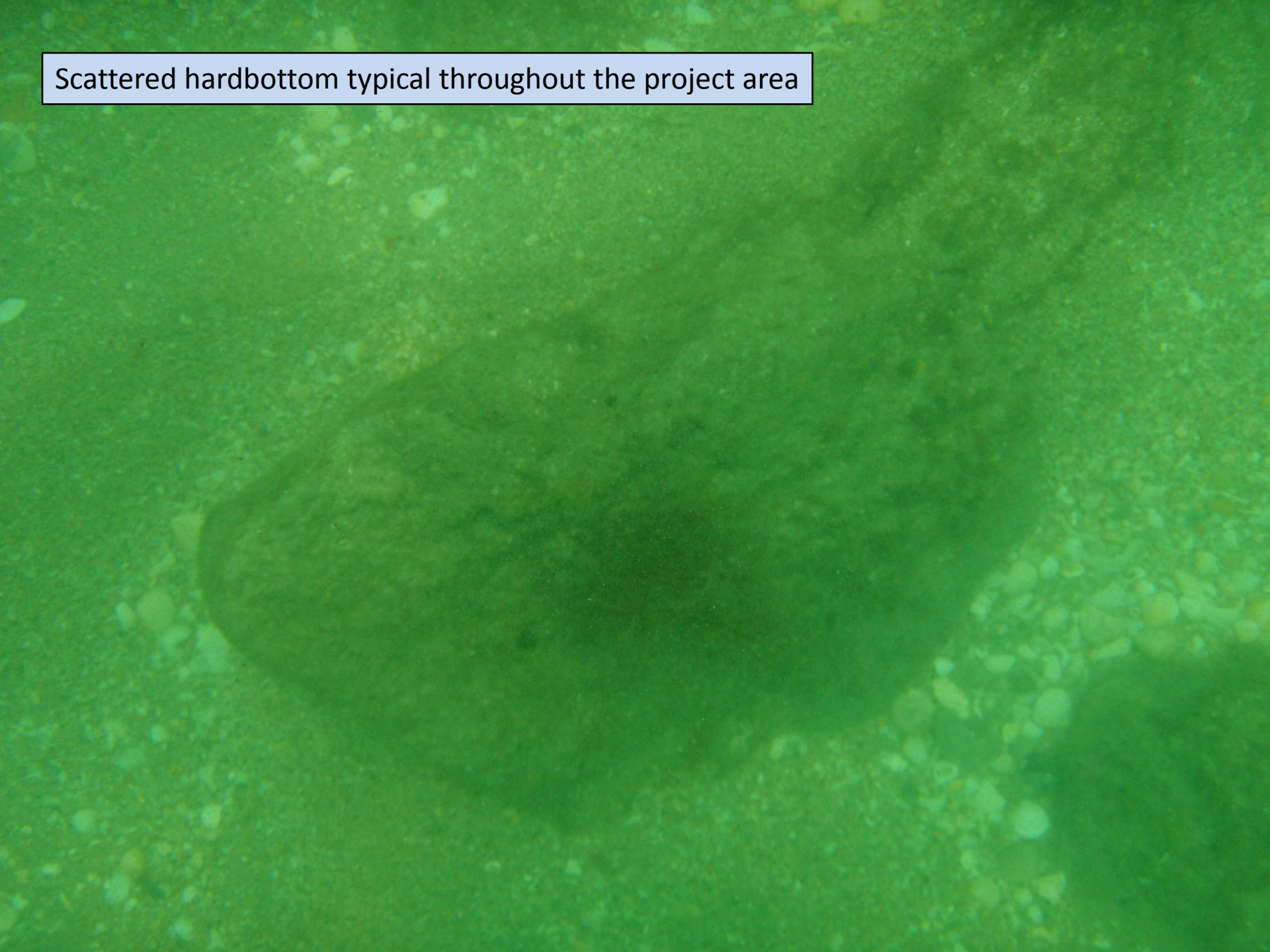


Algae hydroid (*Thyrosocyphus ramosus*)





Scattered hardbottom typical throughout the project area

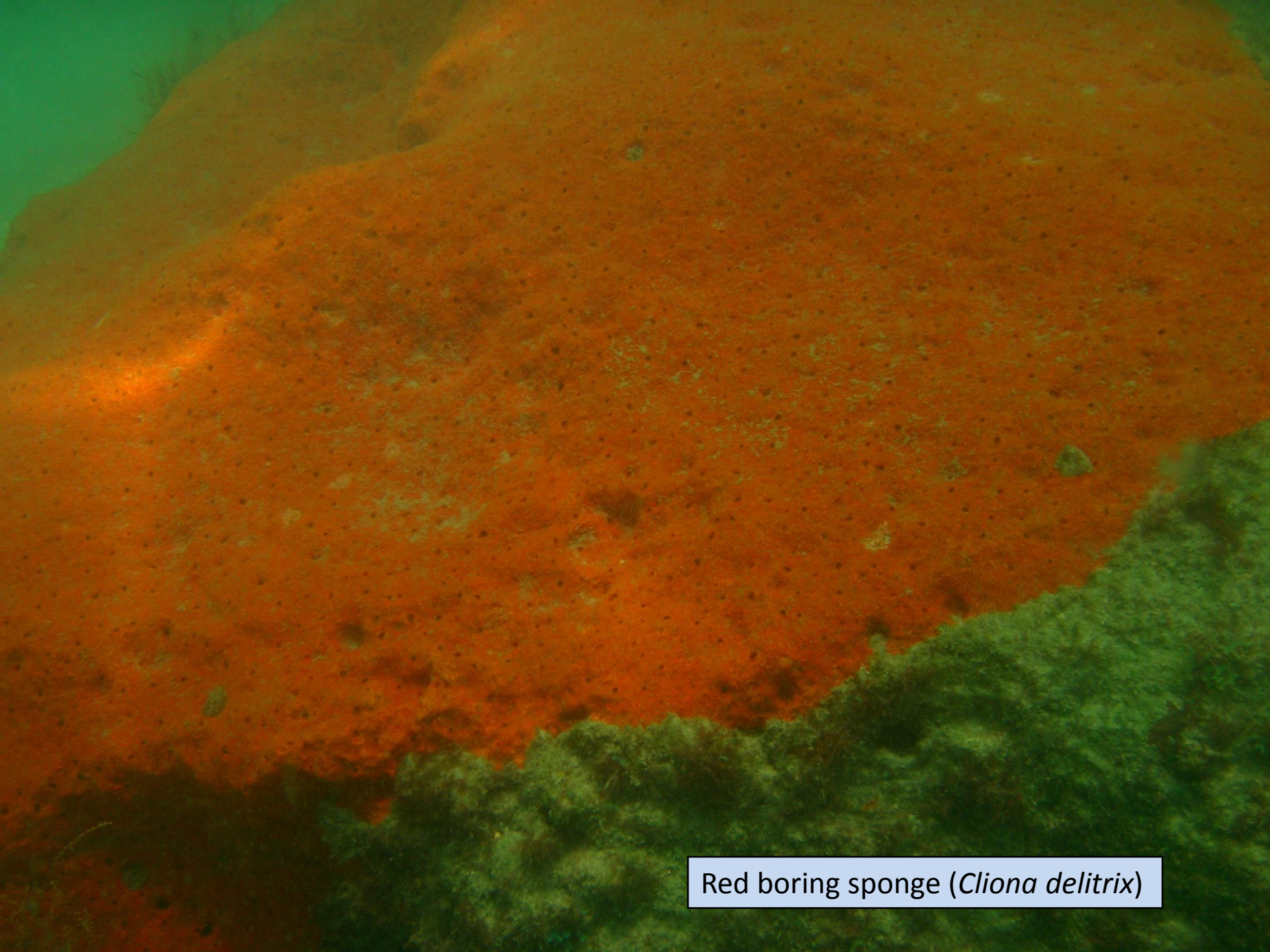


Hardbottom and juvenile grunts (*Hameulon* spp.)



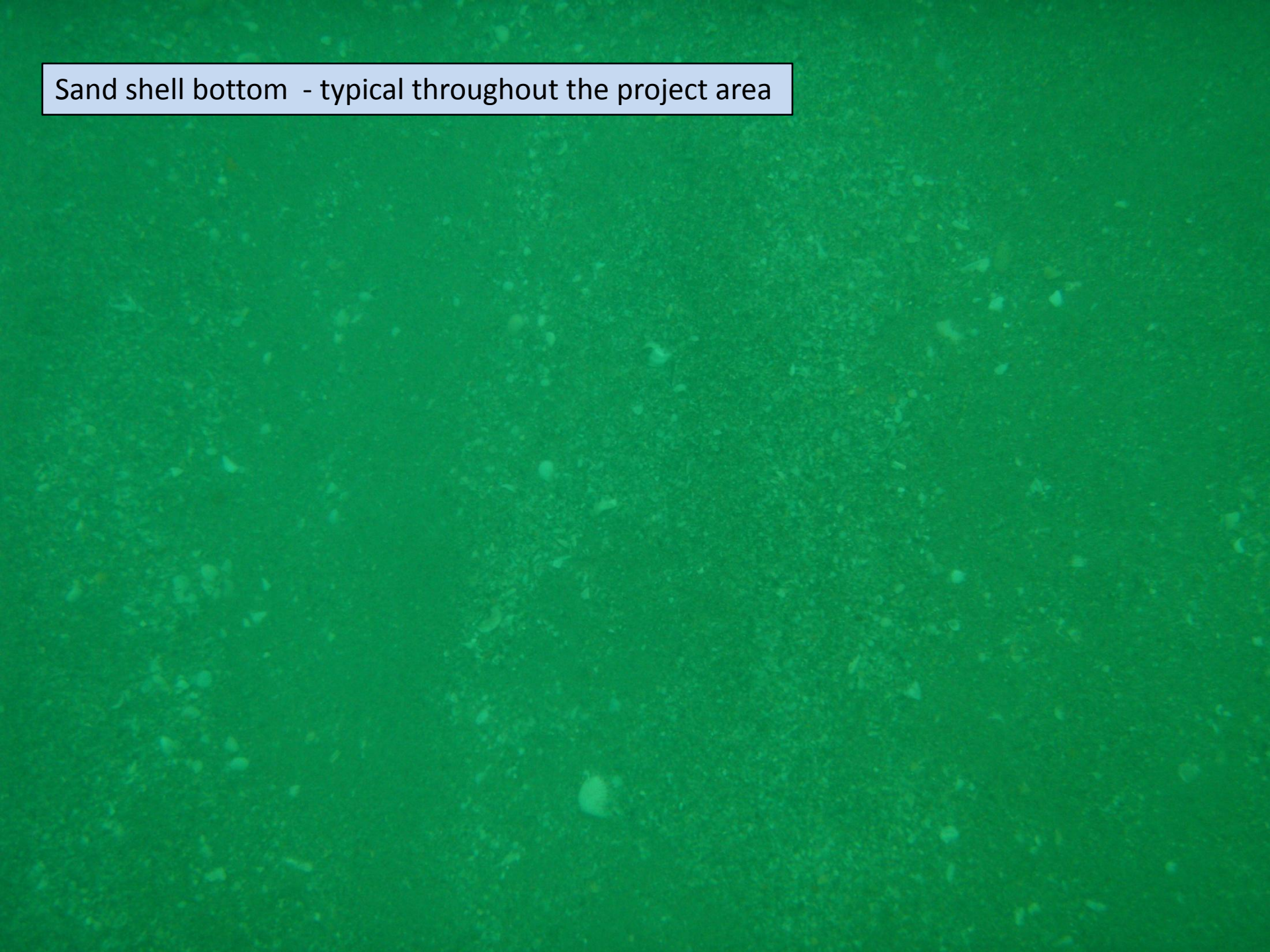
Hardbottom with macroalgae scattered throughout project area





Red boring sponge (*Cliona delitrix*)

Sand shell bottom - typical throughout the project area



Jupiter Inlet north jetty (Point 1 in the application)



Manta ray (*Manta birostris*)

